

2023-24

Child Evangelism Fellowship  
SOUTH CAROLINA



# PRAYER GUIDE

CATAWBA RIVER

COASTAL

COLUMBIA-MIDLANDS

GREATER PEE DEE

GREENVILLE-PIEDMONT

HEART OF PALMETTO

LAKELANDS

LOWCOUNTRY

ORANGEBURG-LOWER SAVANNAH

SANTEE-WATEREE

UPSTATE



# PRAYER IS THE WORK OF THE MINISTRY

*CEF* Friends;

For more than 70 years, the LORD GOD has given vision to HIS people through *CEF* for the spiritual well-being of children in South Carolina. Today, whether you are a volunteer, a financial donor, or prayer partner, your prayers are an important part of leading children throughout South Carolina toward salvation.

Prayer is one area which every person can participate in, whether near or far. Regardless of what our present circumstances may be, each of us can attend to the concerns and needs of the children by talking to the ALMIGHTY GOD.

GOD has established eleven Local Chapters of *CEF* across our state with the mission to support HIS Church and her calling to "go and make disciples" - in particular, children. Each of these Local Chapters have their own unique challenges and opportunities. While you may not know the staff and leadership of each Chapter, their purpose is all the same - to evangelize children with the Gospel, disciple through the Word of GOD and establish them in the local church.

We hope you might use this prayer guide to help you participate with us in the great high calling of intercession.

Consider becoming an ongoing prayer partner with your Local Chapter of *CEF*. Contact a staff member who can provide additional prayer requests and opportunities for corporate prayer times. You can find contact information for all eleven Local Chapters at [cef-sc.org/locations](http://cef-sc.org/locations).

With respect to Christ, His word and work,



Lee Stillinger, State Director  
Child Evangelism Fellowship of South Carolina



---

**Child Evangelism Fellowship** is a Bible-centered organization composed of born-again believers whose purpose is to evangelize boys and girls with the Gospel of the Lord Jesus Christ and to establish (disciple) them in the Word of God and in a local church for Christian living.

We have eleven local chapter offices across the state of South Carolina, supporting every county and community. For more information about the mission and vision of *CEF* visit our website at [cef-sc.org/locations](http://cef-sc.org/locations)

# PRAYER GUIDE

Child Evangelism Fellowship  
SOUTH CAROLINA

## CATAWBA RIVER

- New location to accommodate volunteers that cannot climb stairs.
- New committee members
- Church partners in York County
- Finances to hire a director

## COASTAL

- Additional Local Committee members
- That the Coastal Chapter will be able to raise financial support to hire a full-time Local Director
- For the restart of GNCs that closed due to the COVID pandemic

## COLUMBIA-MIDLANDS

- The Staff/Funding/Churches/Volunteers to enable us to host a Good News Club in every elementary school in our district.
- Continued success and favor for our military base ministry.
- Effectiveness in ministry on every level. God's favor as we maintain strong, Godly relationships with those we serve (children, donors, coworkers, churches, volunteers).
- Godly stewardship and wisdom in ministry affairs.

## GREATER PEE DEE

- Rebuilding committee and staff
- Regaining trust and financial giving
- God to send the volunteers.
- God to raise up new church partnerships.
- Revitalize CYIA

## GREENVILLE-PIEDMONT

- That the Lord would continue to provide new church partners and financial partners to His ministry for continued growth.
- That our Local Committee and Staff would continue to be unified in our hearts and efforts.
- That children's lives would be transformed with the Gospel of Jesus Christ.

## HEART OF PALMETTO

- That many churches and individuals in our area would catch the vision of CEF to reach the boys and girls with the gospel
- That God would open up the storehouses of Heaven and provide the resources we need to add additional staff and enlarge our territory of ministry
- That we would be able to find partners in our outlying counties where we currently have NO ministry , DILLON AND MARLBORO COUNTIES
- That God would lead the HOP to new committee members in 2023-2024

# PRAYER GUIDE

## Child Evangelism Fellowship SOUTH CAROLINA

### HEART OF PALMETTO con't

- That our current church partnerships and GNCS would continue to thrive and flourish and grow and our impact into the lives of the children would continue to be impactful

### LAKELANDS

- Many children and subsequently, families would come to know the Lord
- Biblically sound, racially diverse church partners
- A local committee member from Edgefield County
- Energetic volunteers
- Increase in monthly donors

### LOWCOUNTRY

- Pray for Hazel Bostick (CEF of the Lowcountry Office Manager) and her son Josh for physical healing.
- Praise for the addition of two new CEF of the Lowcountry Committee Members.
- Pray that CEF of the Lowcountry can re-establish all original Good News Clubs that were up & running before COVID.
- Pray that CEF of the Lowcountry can establish new donor donations for the 12<sup>th</sup> Annual Golf tournament on Monday November 6<sup>th</sup>.

### ORANGEBURG-LOWER SAVANNAH

- That The Lord would provide a new Local Coordinator.

### ORANGEBURG-LOWER SAVANNAH con't

- That The Lord would provide new additional board members.
- That The Lord would use upcoming microevent(s) to bring in new ministry supporters (financial, volunteer, etc.).
- That The Lord would open doors for new ministry opportunities through Good News Clubs and Party Clubs.
- That The Lord will open the hearts of children in our local area to receive Jesus as their Savior!

### SANTEE WATEREE

- Additional Local Committee members

### UPSTATE

- Expand Community Knowledge of CEF
- Two or three new local committee members
- Continue to build back the GNC program – after Covid

### STATE

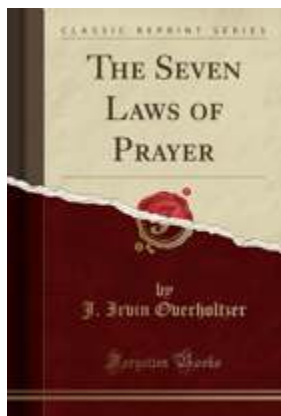
- For strength and unity for the state board, local committees, staff, and volunteers as they continue to rely on the Lord to lead them in knowing how to reach children effectively.



# ADDITIONAL PRAYER RESOURCES

---

FIND ALL THESE RESOURCES AND MORE AT [CEF-SC.ORG/PRAYER](http://CEF-SC.ORG/PRAYER)



## The Seven Laws of Prayer J. Irvin Overholtzer, Founder of CEF

Many, many Christians are only occasionally receiving answers to their prayers, or not at all. Many no longer expect answers and continue to pray only from a sense of duty. This is not because these persons are not Christians, neither is it always because there is some flagrant sin in their lives. It is often because the conditions of answered prayer are not being met. These conditions may not even be known or, if known, not understood. It is in regard to these conditions or Laws—for they are virtually that—that we purpose to write.



## Google Earth Virtual Prayer Walk

Prayer walks have been a staple of believers for decades in the example of Joshua walking around the walls of Jericho. Although the public elementary schools are currently prohibiting activities due to the COVID-19 threat, we can still have prayer walks through technology. Google Earth provides access to every public elementary school location. On this website, simply find the CEF Chapter, school district and school name to click on the link and virtually observe the school to pray over and around the entire property.

“...let no man despise the young, or think them insignificant. I claim a front place for them. I ask that, if others are kept back, at any rate their feebleness may make room for the little ones. They are the world's future. The past has been and we cannot alter it; even the present is gone while we gaze on it; but our hope lies in the future therefore, by your leave, room for the children, room for the boys and girls!”

Charles Spurgeon





Since 1937

CEF  
CHILD EVANGELISM  
FELLOWSHIP®

*Reaching children worldwide™*

SOUTH CAROLINA

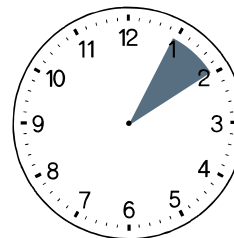
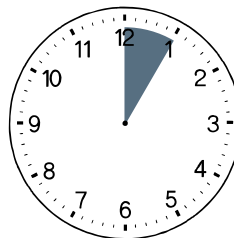
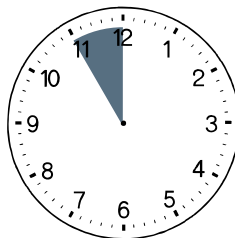
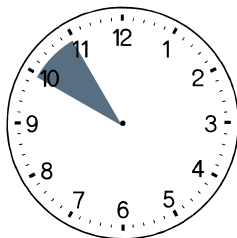
WORLD  
DAY OF PRAYER  
2023



Virtual Prayer Meeting

Wednesday, November 1st, 2023

At the start of every hour from 10AM till 2PM



Check With Your Local CEF Office For Details

[CEF-SC.ORG/LOCATIONS](https://cef-sc.org/locations)